

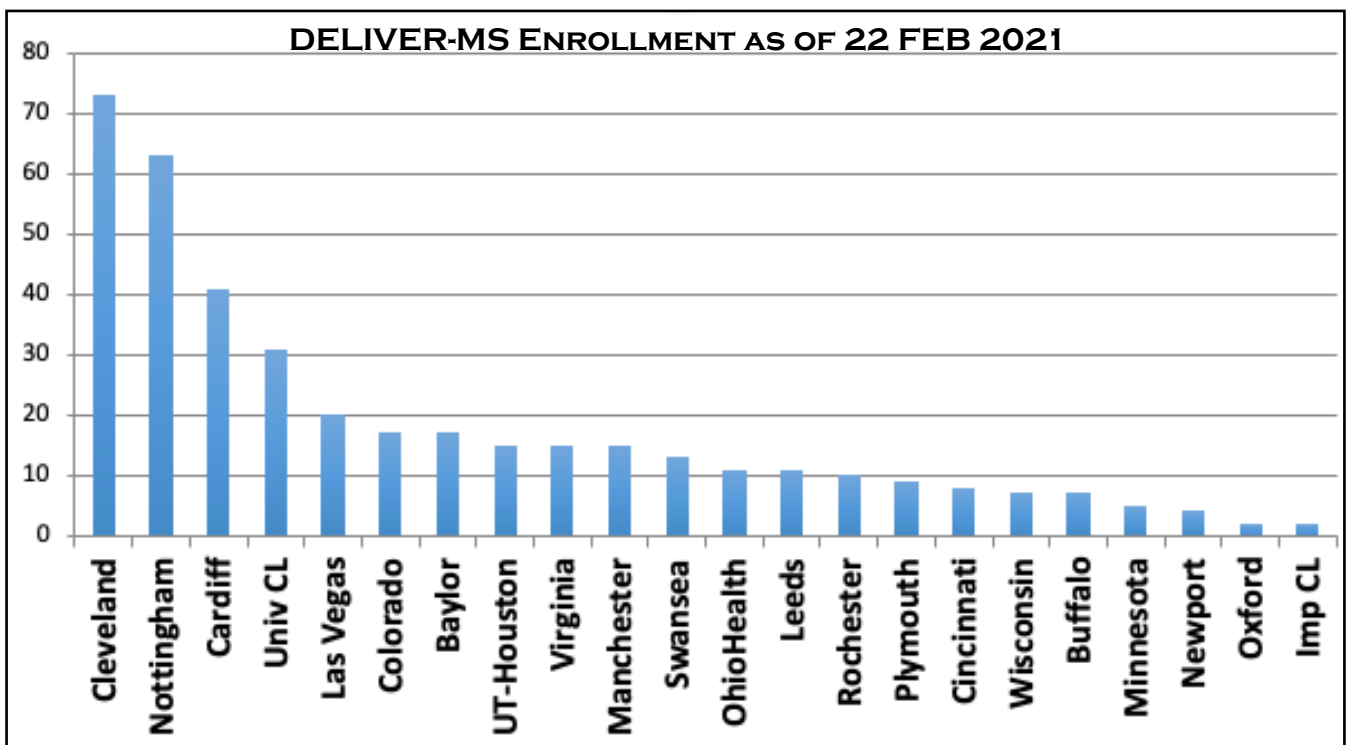


FEBRUARY 2021

Does early treatment with highly effective DMT improve prognosis for people with MS?

WELCOME TO THE DELIVER-MS NEWSLETTER

This month saw a solid increase in recruitment to the DELIVER-MS study. The US have widened the gap, but with several sites close to opening on both sides of the Atlantic it could still go either way. This month we focus on our colleagues in the DELIVER-MS MRI Analysis lab, and also have exciting news on our latest DELIVER-MS arrival (see below)!



DELIVER-MS TEAM FOCUS: MRI ANALYSIS

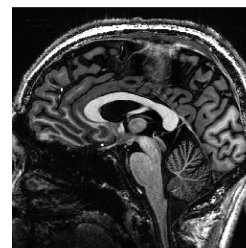
This month we are delighted to give you a glimpse of what goes on behind the scenes of MR image analysis in DELIVER-MS. Kunio Nakamura, a biomedical engineer and image analysis, expert leads the MR imaging analysis team in Cleveland. MRI physicists Paul Morgan (UK) and Ken Sakaie (US) help sites ensure imaging protocols run smoothly across all sites. Kunio told us about the process.

>> Why is MRI so important in the DELIVER-MS study?

MS damages the brain and nerves. One thing that makes MS so hard to treat is that injury to tissue can accumulate without the patient noticing. MRI is important because it lets us see the injury long before a person with MS has any worsening of symptoms. Our large team of clinicians, scientists and coordinators carefully curate your images. As we are looking for subtle changes, we need a lot of scans to make sure changes are really happening. Also, there are subtle differences between images taken on different scanners, so it's important to get all your scans taken on the same equipment. That makes it easier to know that the changes are due to biology, not hardware.

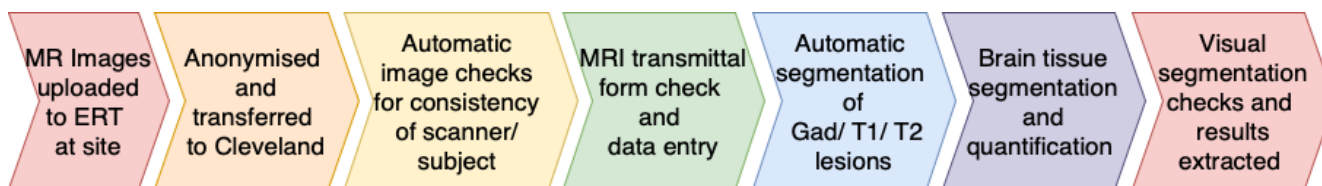


Kunio Nakamura




Ken Sakaie

>> What happens to the MR images once they are acquired?





NEWS AND UPDATES

 Congratulations to Praneeta and Yousuf on the safe arrival of baby Maya. We wish them well as they start out as a new family. As you know we are one big happy family here at DELIVER, but sadly Nikos' (dream) premonition about the due date turned out to be incorrect. And Praneeta still hasn't taken up John Mays' offer on being their live-in au pair. But still, it is early days....



COVID-19 UPDATES

-  We welcome the roll out of COVID vaccines for our participants in DELIVER-MS. As you know, people with MS should be vaccinated; all vaccines are expected to be safe, including for those on DMTs. There may be some decrease in efficacy with cell depleting therapies.
 -  There are uncertainties over ideal timing of the vaccine, but we remind you that (i) a 90d window is permitted between screening and DMT start, (ii) altered dosing schedules of DMTs are permitted. Both should enable participants to receive the vaccine without protocol deviation.
-

FINAL THOUGHTS

We would like to thank you for your continued dedication to DELIVER-MS and your ongoing commitment to advancing clinical research during the pandemic.

Relevant Links

Our website is:

www.deliver-ms.com

Our mailing address is:

planchs@ccf.org (US) and aimee.hibbert@nuh.nhs.uk (UK)