

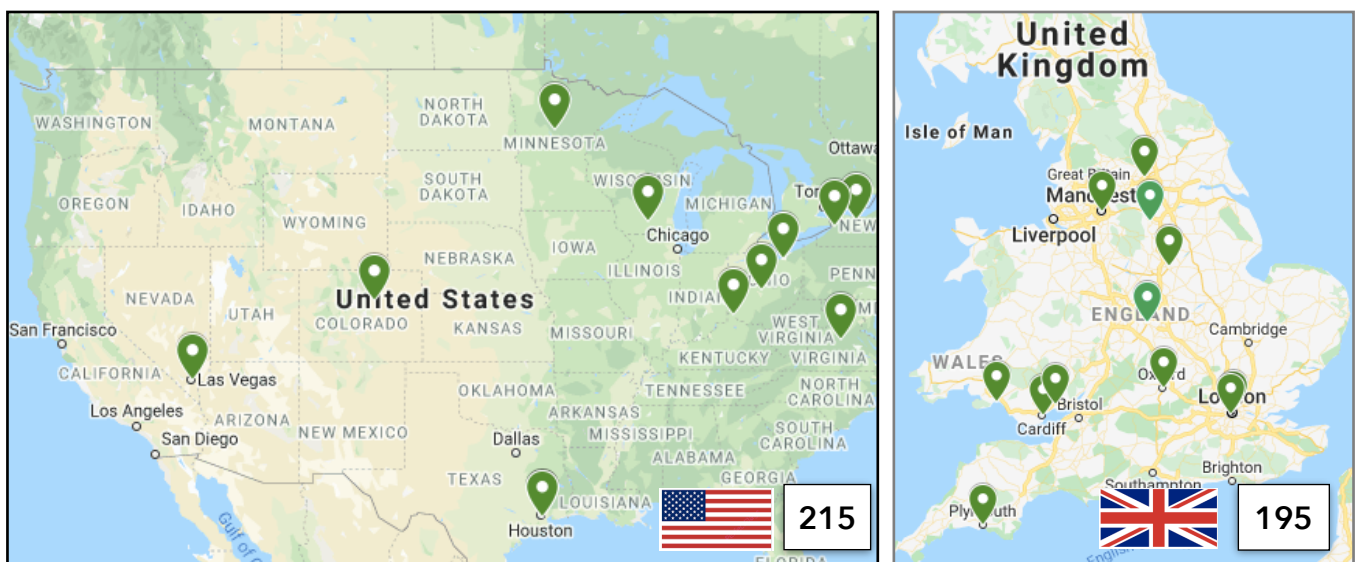


MARCH 2021

Does early treatment with highly effective DMT improve prognosis for people with MS?

WELCOME TO THE DELIVER-MS NEWSLETTER

This month we celebrate a milestone as we reached the halfway point of recruitment to the trial - well done everyone for all your amazing effort in getting us this far! It may feel like an enormous challenge to reach the target of n=800, but with 23 sites now open and more joining, **we could complete recruit this year if each site recruits 1-2 participants per month.** Check out who has fulfilled that target in the last month below. We're delighted to showcase Baylor this month; as our sixth top recruiting site overall, they share their experience.



DELIVER-MS ENROLLMENT LAST CALENDAR MONTH

2 participants

- Baylor
- Cardiff
- Cleveland
- Las Vegas
- UT-Houston

1 participant

- Colorado
- Nottingham
- UCL
- Virginia

0 participants

- Buffalo
- Coventry
- Cincinnati
- Leeds
- Imperial
- Manchester
- Minnesota
- Newport
- Ohio Health
- Oxford
- Plymouth
- Rochester
- Swansea
- Wisconsin

DELIVER-MS TEAM FOCUS: BAYLOR

This month we are delighted to introduce our colleagues, Dr. George J Hutton (PI), Dr Fernando X Cuascut (sub-I) and Tahari R Griffin (sub-I and Senior Research Coordinator) from Baylor College of Medicine (BCM) in Houston, Texas, USA. BCM's researchers are at the forefront of groundbreaking work used to service individuals in the area and around the world.

Dr. Hutton moved to Baylor from Florida in 1996. He recently became Medical Director of the BCM MS Clinic and Vice Chair for Clinical Affairs at BCM. In his spare time, George is a huge foodie and basketball fan. George also has a passion for cycling. He has ridden in the MS 150 Bike Tour annually since 2001 raising over \$150,000 in total to benefit the National MS Society. He is signed up for his 20th ride in May 2021 - wish him luck!



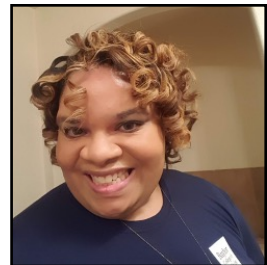
Dr George Hutton

Originally from Puerto Rico, Dr. Fernando Cuascut joined BCM as a fellow in 2019. Now Assistant Professor, Fernando looks forward to furthering his research interests in Baylor. A lover of nature, hiking, and dogs, he has also cycled an MS Bike Tour with George (see photo).



George + Fernando

Ms. Tahari Griffin moved to Houston from Louisiana in 2009, after earning her BSc and MA, and has been a member of the Baylor family ever since. Tahari has extensive experience of clinical trials and research studies in biology, physiology, elder abuse, vaccines, and neurological diseases. Spare time for Tahari means family time with her mother and travel. She loves Paris, Amsterdam, and NYC.









Ms Tahari Griffin

Between them, Dr. Hutton, Tahari, and Dr. Cuascut have worked on > 50 successful trials in the MS Clinic. Respect, trust, and appreciation are the key to their success, as they continue to push for better patient experiences.

As Tahari recruited her 20th patient to DELIVER-MS she left us with these words: "Despite the pandemic, the BCM team has continued to enroll, and keep up with DELIVER-MS visits. Enrolled patients are enthusiastic and eager to help. In the early pandemic, we realised that doctor appointments became one of the few places patients felt safe, left the house or saw a friendly face. No patient invited to enroll has ever declined in BCM. Newly diagnosed MS patients also love the transition to research, which brings attentiveness, more follow-up, counsel and contact. And the observational arm makes people feel as if they have a say in research. With great patients and a great team, who could ask for anything more?"

NEWS AND UPDATES

-  A reminder that biobanking remains open despite the pandemic. The study protocol has been amended to allow drawing blood at M12, M24, and M36 if it was not conducted at baseline/ M6. Remember blood can only be taken at a total of 2 time points during the entire study period.
 -  A reminder: please do not send biobank samples on Fridays as they cannot be processed. For US sites, consider checking FedEx website for disruptions during severe weather and contact Sarah/Aimee for other Qs.
 -  Please liaise with your MRI technicians to ensure that they are using the correct imaging protocol for DELIVER-MS, and that all participants are being imaged on MRI scanners that have been approved for the study.
 -  DELIVER MS Investigator talks have now begun with Enrique Alvarez speaking in Nottingham and Emma Tallantyre speaking in Cleveland. Do let us know if you'd also like the opportunity to link in with another centre.
-

-  We welcome the roll out of COVID vaccines for our participants in DELIVER-MS. People with MS should be vaccinated. All vaccines are expected to be safe, including for those on DMTs although there may be some decrease in efficacy with cell depleting therapies.
 -  There are uncertainties over ideal timing of the vaccine, but we remind you that (i) a 90d window is permitted between screening and DMT start, (ii) altered dosing schedules of DMTs are permitted. Both should enable participants to receive the vaccine without protocol deviation.
-

FINAL THOUGHTS

Thanks again for your ongoing dedication to DELIVER-MS. Keep up your commitment to advancing clinical research during the pandemic by aiming to recruit one patient per month. We can do this together!!

Relevant Links

Our website is:

www.deliver-ms.com

Our mailing address is:

planchs@ccf.org (US) and aimee.hibbert@nuh.nhs.uk (UK)