

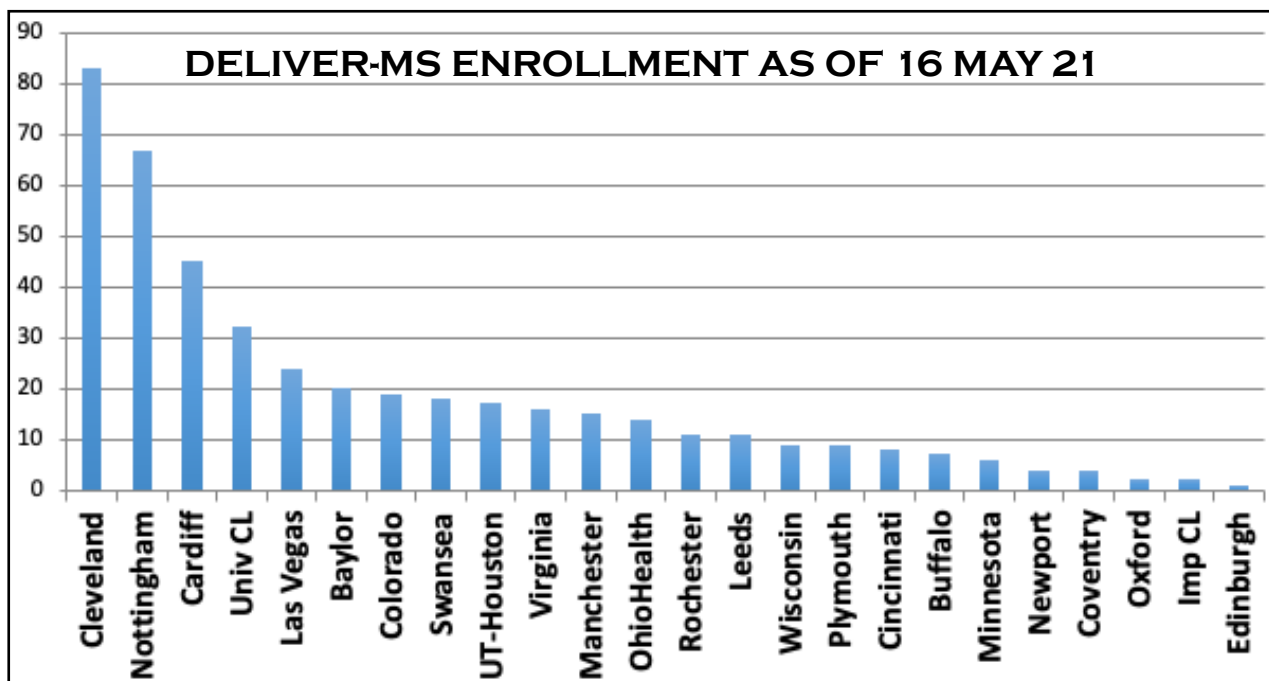


MAY 2021

Does early treatment with highly effective DMT improve prognosis for people with MS?

WELCOME TO THE DELIVER-MS NEWSLETTER

We hope you are all well as we continue to take tentative steps back to normality. The equipoise between early high efficacy and escalation approaches to DMT have been amplified by the COVID vaccine roll out so we urge you to continue to recruit participants to this important study. **Cleveland, Coventry and Swansea** were propping up recruitment this month (see below) with a fairly slow month elsewhere. A reminder of our target of 1-2 participants per site, per month. We are delighted to introduce our new Coventry Team this month, who have recently opened as a site and have made a great impression already! Dr Tarunya Arun and her team tell us a little about their early experience of DELIVER.



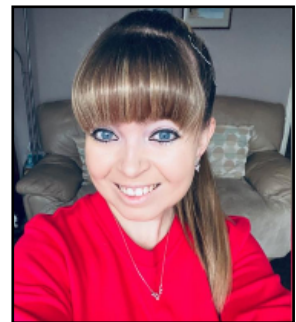
DELIVER-MS FOCUS: COVENTRY

The University hospitals of Coventry and Warwickshire (UHCW) is a large teaching hospital serving a population of over a million people. UHCW is the principal teaching hospital for Warwick Medical School, with whom they work in close partnership to develop clinical research. The MS team look after around 3,200 MS patients in the Coventry area and are very active in MS clinical trials. The MS research team is a small but dedicated one, consisting of two research nurses (Jo Gmerek & Chloe Sahan), a research assistant (Rebecca Grenfell) MRI technician (Michael Diokno) as well as Dr Tarunya Arun (Consultant Neurologist & Research Lead for neuroscience) and Dr Abdullah Shehu (Consultant Neurologist).

We asked the Coventry team about their experience of DELIVER-MS so far:

Why did you decide to join the DELIVER-MS study?

“Being involved in this vital academic study is an exciting opportunity and we are delighted to be part of it. Despite a growth in the number of DMTs available, the important question about the most suitable paradigm to use in DMT naïve people with MS (pwMS) remains unanswered. A dilemma exists in the minds of many MS neurologists and pwMS as to whether to choose a stepwise approach (i.e. escalation) or moving straight to a high efficacy treatment and this is often a daunting question. Being part of this pragmatic trial helps us try to resolve this dilemma and ultimately enable pwMS to make the right choice.”



Chloe Sahan



Rebecca Grenfell

What has been your experience so far?

“We have had very willing and enthusiastic patient participation in the trial so far. We have recruited four patients in the two months since we reopened post COVID and hope to continue to recruit steadily. COVID pressures have posed significant impediments to running face-to-face clinics. However, all through COVID-19 we’ve never forgotten our trial participants. We’ve constantly kept everyone in the loop and adapted so that our MS trials can continue.”



Tarunya Arun

Do you have a message for the other DELIVER MS sites?

“It is great to part of the DELIVER MS family, onwards and upwards!”

FINAL THOUGHTS

It is wonderful to see the DELIVER-MS family growing with several new sites opening in the last few weeks. We welcome new contributors and thank you all for your ongoing dedication to DELIVER-MS. Remember we can complete study recruitment this year if we enrol 1-2 participants per month. We can do this!!

Relevant Links

Our website is:

www.deliver-ms.com

Our mailing address is:

planchs@ccf.org (US) and aimee.hibbert@nuh.nhs.uk (UK)