



APRIL 2024

Does early treatment with highly effective DMT improve prognosis for people with MS?

**THANK YOU !!
RECRUITMENT TO**



**DELIVER-MS
IS NOW**

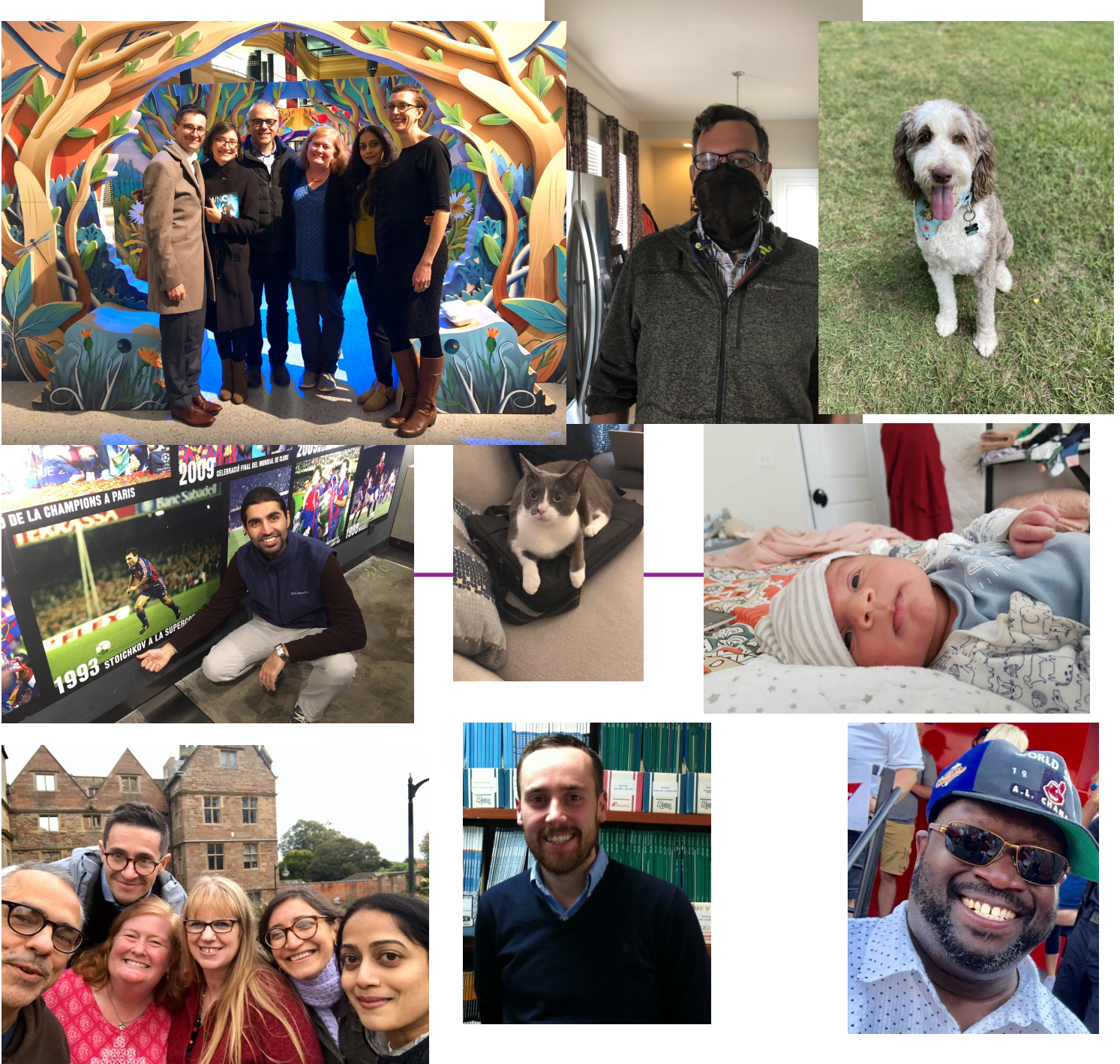
Closed

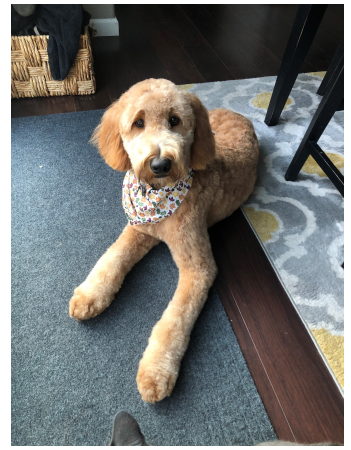
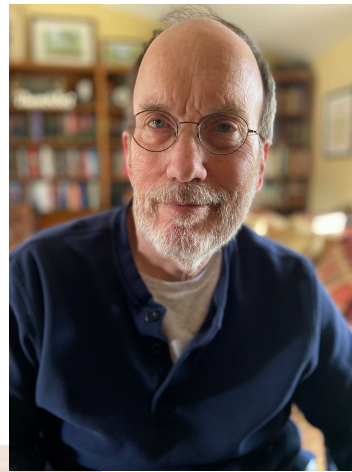
This is no April fool - we are now officially closed to recruitment into the DELIVER-MS trial! Thank you all so much for the work you have done to achieve this milestone. We managed to recruit an additional 15 participants to mitigate some losses to follow-up, which will maximise our power to answer our primary question.

We will continue to remain in touch on a quarterly basis now, with key study updates.

A ROUND UP OF THE NEWSLETTERS :

We will continue to keep you updated quarterly on trial news. But in case you miss me before the next installment, here is a round up of fun newsletter photos from the years gone by!





FINAL THOUGHTS:

Once again, we would like to thank teams for the amazing effort that has been required to complete study recruitment. We look forward to being in touch with the first manuscripts soon. In case you miss me, here are some pictures of DELIVER through the years.